



Red Dot Payment WooCommerce Plugin Setup Guide

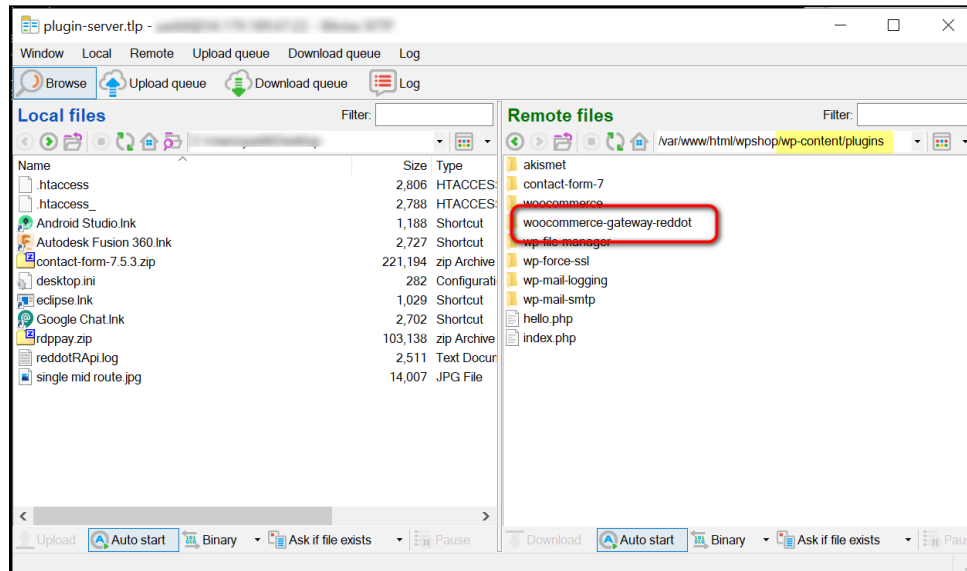
Supported Version

Below is the result of RDP internal regression testing on several Wordpress and WooCommerce versions.

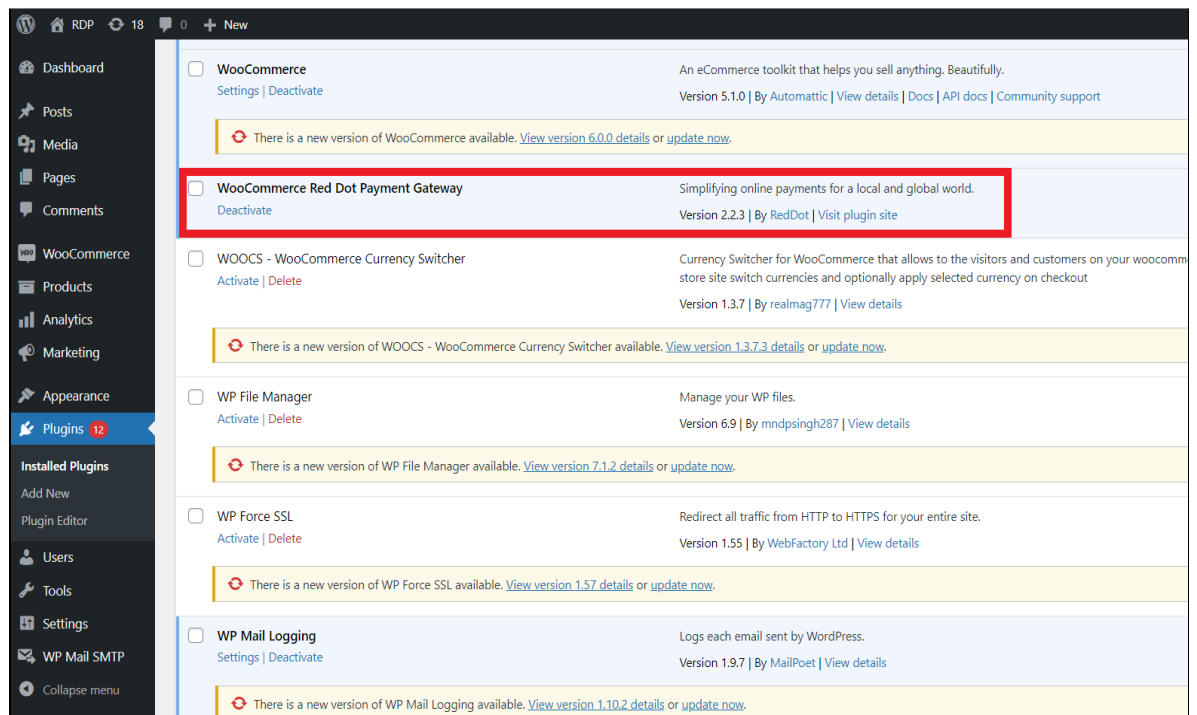
WooCommerce Version	WordPress Version	Status
5.1.0	5.8.2	Passed
4.9.2	5.6	Passed
4.9.0	5.6	Passed
4.7.0	5.5.3	Passed
4.1.1	5.4.1	Passed
4.1.1	5.3.3	Passed
3.8.1	5.4.1	Passed
3.8.1	5.3.3	Passed
3.7.1	5.2.1	Passed
3.6.1	5.1.1	Passed
3.5.1	5.0.1	Passed
3.4.1	4.9.1	Failed

Installation Guide

1. Installing plugin by manually uploading folder using FTP
 - 1.1. The plugin folder needs to be uploaded on the path: `/wp-content/plugins`.

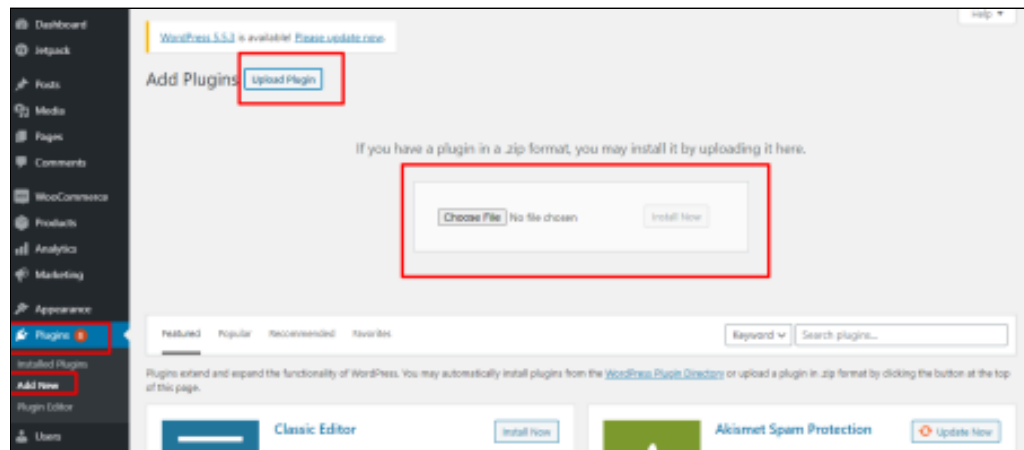


- 1.2. Once uploaded, users can see the plugin “WooCommerce Red Dot Payment Gateway” under Plugins > Installed Plugins list.



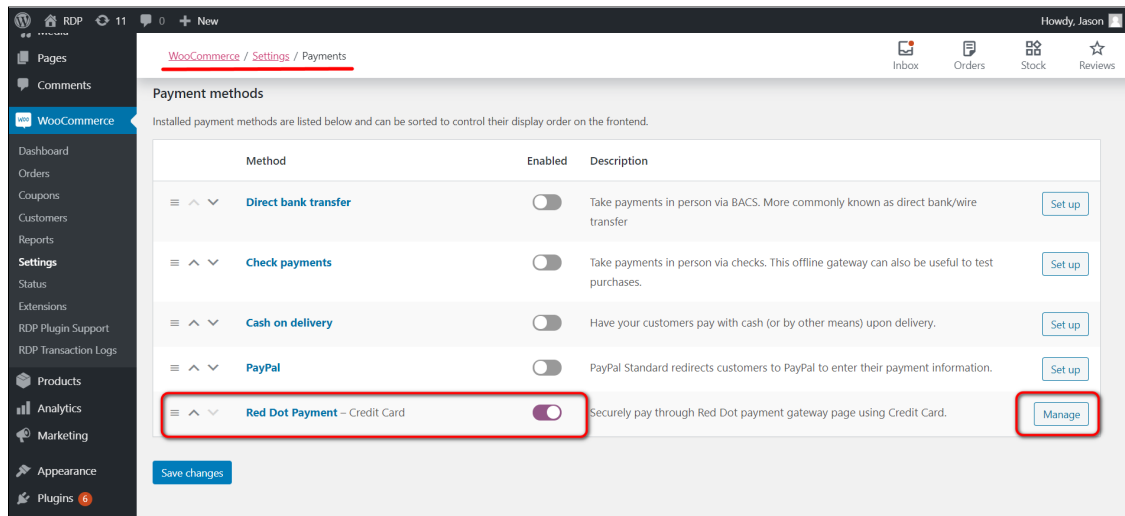
2. Installing plugin by uploading the plugin from WordPress Admin
 - 2.1. Go to Plugins > Add New > Upload Plugin > Choose File > Install Now.
 - 2.2. Once uploaded, users can see the plugin “WooCommerce Red Dot

Payment Gateway” under Plugins > Installed Plugins list.

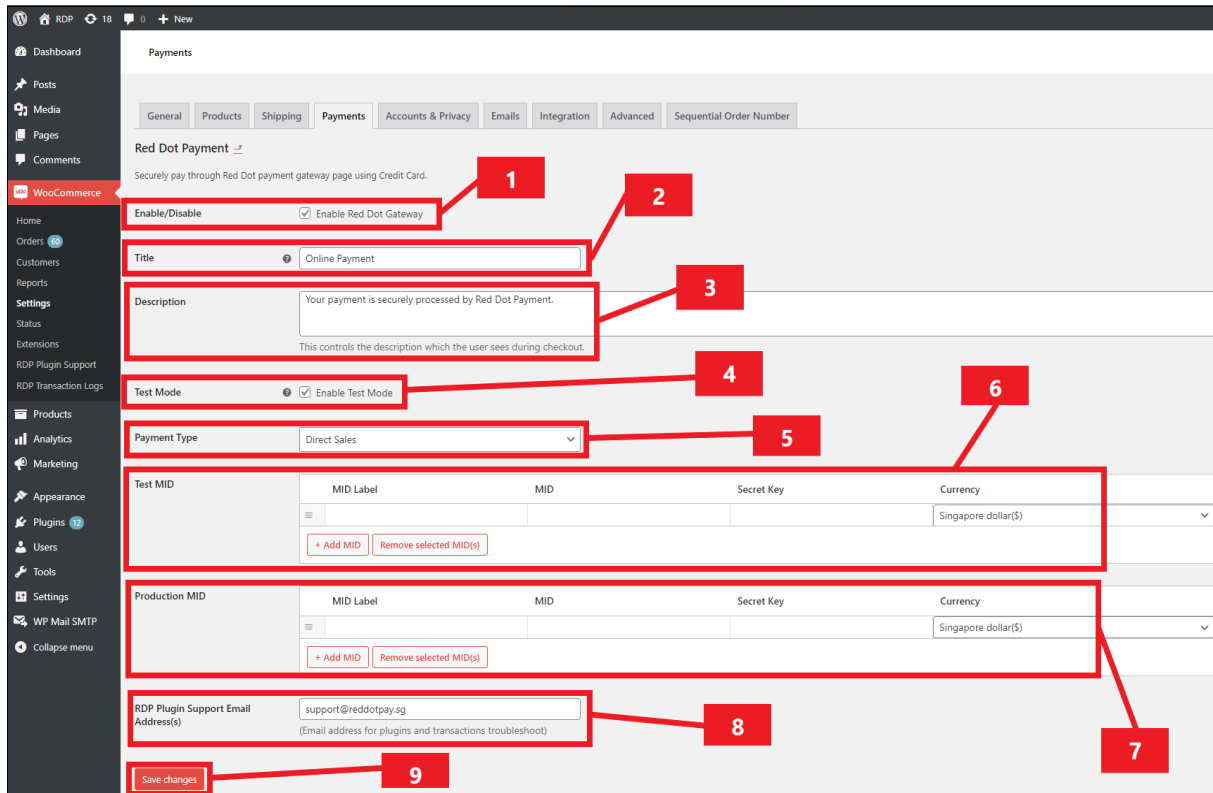


Setup and Configuration

1. After activating the plugin from the plugin page, navigate to WooCommerce Setting page.
2. **WooCommerce > Settings**, find Red Dot Payment under **Payment Tab** then click **Manage**



- 2.1. Enable/Disable checkbox
Check the box to enable Red
- 2.2. Title
Will be reflected in the checkout page payment option, example: Credit Card or Online Payment.
- 2.3. Description
Add a brief description of the payment options, the description can not be left empty.
- 2.4. Test Mode checkbox
Check the box to enable test mode if you are doing a test transaction and leave it uncheck if you are doing a live MID transaction.
- 2.5. Payment Type
Currently supporting Direct Sales transaction and Pre-Authorization for two step payment collection (Auth + Capture)



2.6. Test MID, Use this option for staging (testing).

2.6.1. MID Label: Will be reflected in the payment option at the checkout page

2.6.2. MID, Secret Key and Currency: Register the MID detail given by your account manager

2.7. Production MID Details : Use this option for Production (Live).

2.7.1. MID Label: Will be reflected in the payment option at the checkout page

2.7.2. MID, Secret Key and Currency: Register the MID detail given by your account manager

2.8. RDP Plugin Support Email Address(s) :

2.8.1. RDP Plugin Support Email Address(s), key in support@reddotpay.com.



2.8.2. It can accept multiple email addresses separate by comma,
advisable to add RDP account manager email

accountsmanagement@reddotpay.com

2.9. Select the Save Changes button to save the configuration once done.

END
